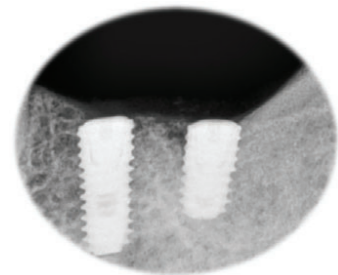


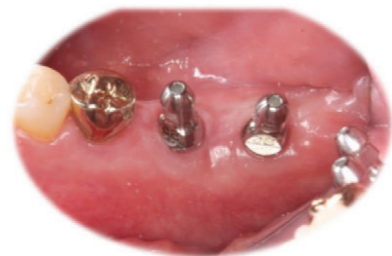
SMART Abutment

Osstem CAD/CAM Abutment

5. Process overview



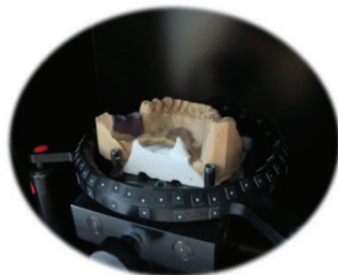
TS fixture implantation



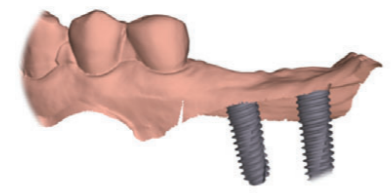
Fixture level impression



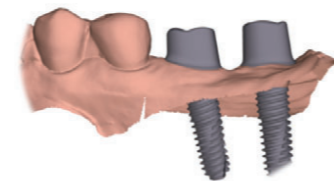
Working model



3D Scanning of the working model



3D Scanned image



Smart design



Fabricated SMART Abutment



Transfer jig



Final restoration



SMART Abutment setting with transfer jig



Connected SMART Abutment



Final restoration cementation

SMART Abutment

Osstem CAD/CAM Abutment

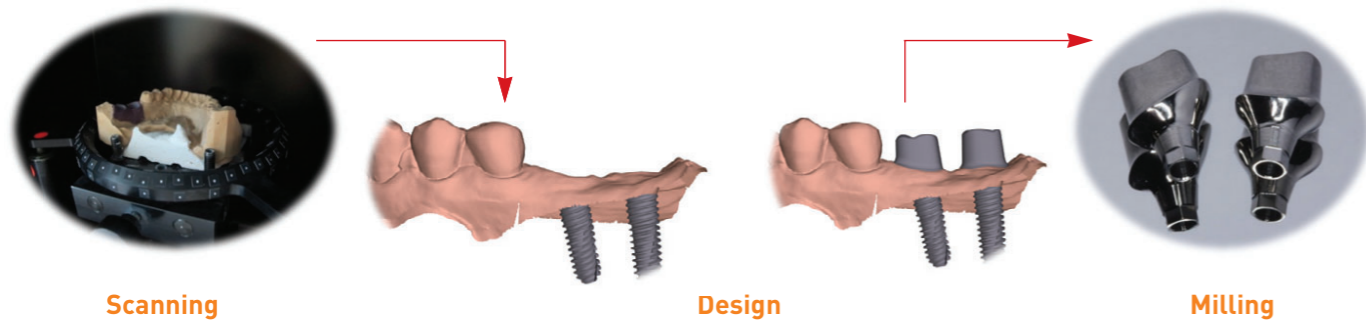


SMART Abutment

Osstem CAD/CAM Abutment

1. Introduction

SMART Abutment is a computer aided designed and manufactured abutment uniquely made for the patient.

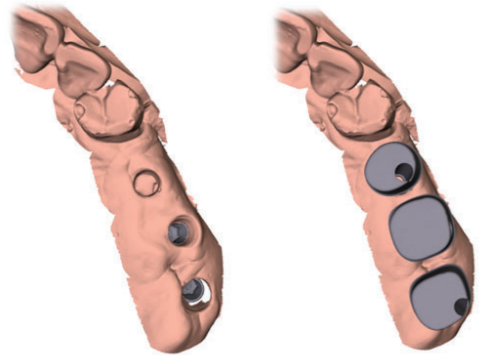


2. Indication

SMART Abutment restored by cement retained method and is ideal choice for many different clinical situations.

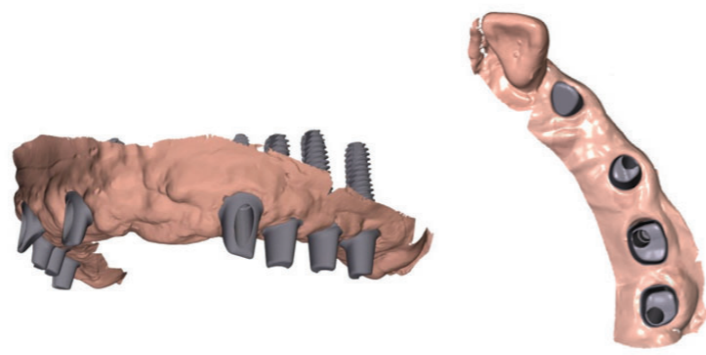
- Can be angulated up to 30°.

1) Implant placed in difficult position and angulation for restoration.



Position & angle error

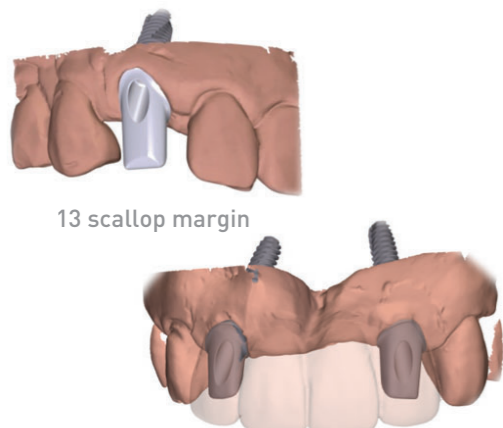
2) Multi-unit case which demands stable support and uniform path.



One unit full mouth case

Unilateral multiple case

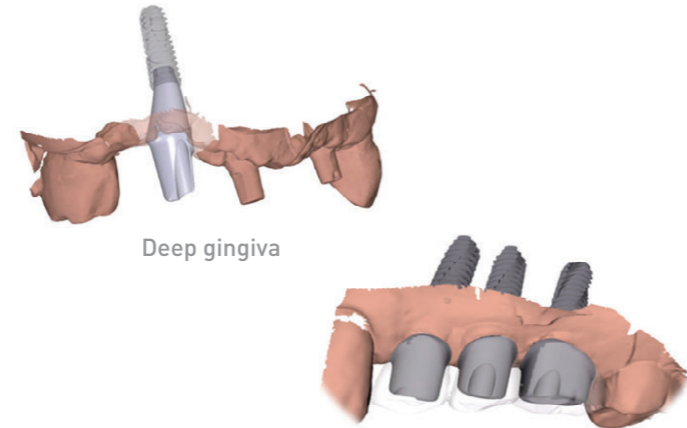
3) Precision demanding anterior cases



13 scallop margin

12-22 anterior 4 unit

4) Cases difficult for pre-fabricated abutments



Deep gingiva

Short clearance

SMART Abutment

Osstem CAD/CAM Abutment

3. Advantage

1) Advantages compared to pre-fabricated abutments.

- Aesthetic restoration is possible even if in difficult angulation and position.
- Uniform abutment path achievable.
- Reduces usage of precious metals and provides optimal support for prosthetics.
- Aesthetically custom designed soft tissue margin and easy to remove excess cement.
- Prevents final crowns from rotating or being out of position.
- Uniquely manufactured for a patient.

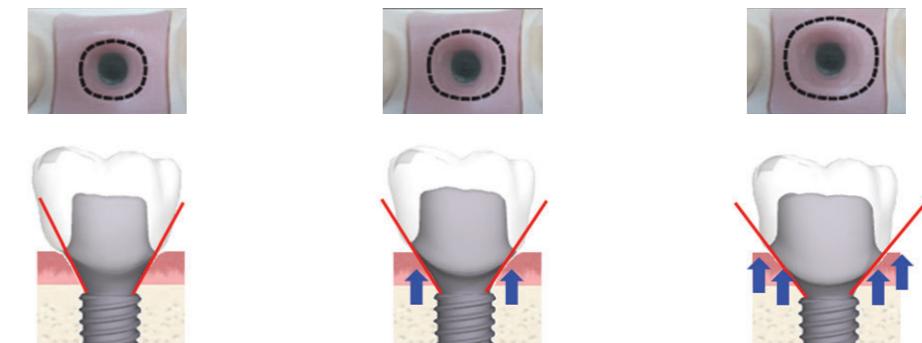
2) Reasons why SMART Abutment is superb:

- Connects to Osstem/HiOssen implants with optimal precision.
- Uses Osstem/HiOssen certified abutment screw.
- Provides 3D design confirmation prior to milling.
- Ability to provide precision milling on occlusal plane.
- Because of prescription is recorded, identically re-manufacturing the abutment is possible without impressions.

4. SMART Abutment design guide

Choosing the emergence profile

Three different emergence profiles are available with consideration to the treatment plan. Note: with larger emergence width, crown looks more natural. However, it may cause blanching and difficulties in engaging SMART Abutment if initial emergence width is small.



Type 1

Type 2

Type 3

Following the soft tissue contour

Slight modification. Blanching may occur

Ideal emergence profile. Re-contouring

TIP

If larger emergence profile is chosen, engaging larger healing abutment will be beneficial during restoration.

