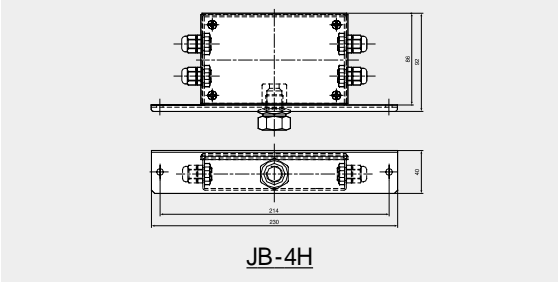


# JB-4H/EXJB-P SERIES Junction Box



### FEATURES & SPECIFICATIONS

Model	Features & Specification
JB-4H	<ul style="list-style-type: none"> <li>- Wash Down (IP65 Class)</li> <li>- 4 Load Cells Summing</li> <li>- Material: Steel</li> <li>- Platform Scales (U, BAR, HFS, R-500, etc.)</li> </ul>
EXJB-3P	<ul style="list-style-type: none"> <li>- Explosion Proof</li> <li>- Wash Down (IP65 Class)</li> </ul>
EXJB-4P	<ul style="list-style-type: none"> <li>- 3, 4, 6 Load Cells summing</li> <li>- Material: Aluminum</li> </ul>
EXJB-6P	<ul style="list-style-type: none"> <li>- Tank, Hopper, Truck Scales</li> <li>- Weighing Bridge</li> </ul>



### DIMENSIONS

